

# RUN, MARY, RUN

with Wayfaring Stranger

Two-Part Treble Voices with Piano

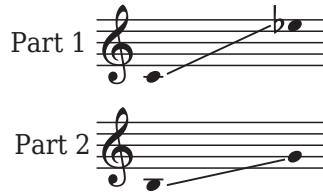
Lynn Shaw Bailey

**BriLee Music**  
*the Voice of Choral Music*

**BriLee Music**  
**Part-by-Part** 

For Accompaniment and Rehearsal Audio  
Go to: [BriLeeMusic.com/BL1307](http://BriLeeMusic.com/BL1307)

Ranges:



Language: English

Use: General

Time: Approx. 2:49

\*Difficulty: Moderate

## Notes

Stories of suffering, fear and despair are universal. thankfully, so are stories of hope and courage. Based on stories from the Bible, spirituals like *Run, Mary, Run* are some of the earliest form of religious music within the African-American community. While this song expresses hope for freedom and endurance in a spiritual sense, lyrics such as "run" and "swing low chariot" also encouraged enslaved people to escape slavery for a better life, both in this world and the next.

## About the Arranger

Innovative, creative and energetic are words that best describe composer, arranger, writer and lyricist Lynn Shaw Bailey (b. 1955). With more than 150 published works, her music includes sacred, educational and secular pieces for adult, youth and children's choirs, as well as compositions for piano, organ, handbells and instrumental ensembles. A native and resident of Georgia for most of her life, Lynn and her husband now make their home in Texas, where they treasure time with friends and family (especially grandkids).

# Run, Mary, Run

with *Wayfaring Stranger*

for Two-Part Treble Voices\* with Piano

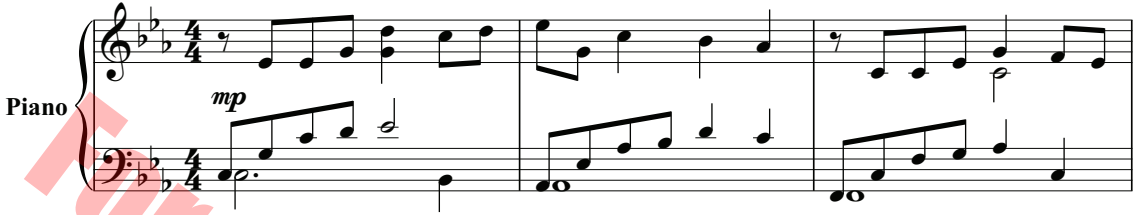
**Run, Mary, Run:** African American Spiritual

**Wayfaring Stranger:** American Folk Hymn

Arranged by Lynn Shaw Bailey

Expressively with heartache and hope (♩ = 74-78)

Piano



4

Part 1 *mp*

I'm just a poor way-far-ing stran-ger a-trav'-lin'

Part 2 *mp*

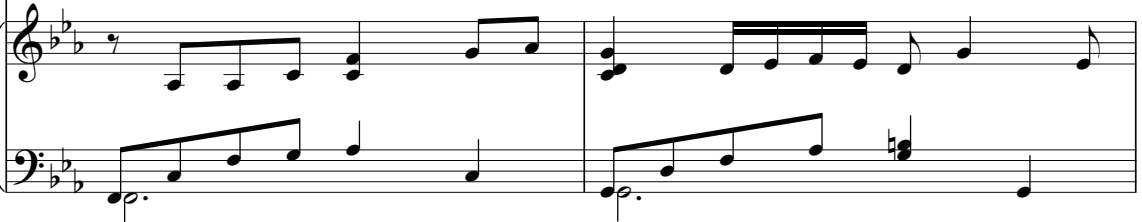
I'm just a poor, poor stran-ger



7

through this world of woe. But there's no

a - trav' - lin' through this world of woe. 'No



\* Also available for SATB Voices (BL1347) and Solo Voice (*A Traveler's Heart*, BLB023).

sick - ness, no toil or dan - ger in that bright  
 sick - ness, no toil or dan - ger in that bright

11 rit.  
 world to which I go, in that bright world to which I  
 world to which I go, in that bright world to which I

rit.

14 **Faster with more urgency** ♩ = 130  
*mf*  
 go.  
*mf*  
 go.

**Faster with more urgency** ♩ = 130  
*mf*

18

\*Run, Ma-ry, run. Run, Ma-ry, run, I say.

\*Run, Ma-ry, run. Run, Ma-ry, run, I say.

22

Run, Ma-ry, run. I know the oth-er world is

Run, Ma-ry, run. I know the oth-er world is

25

not like this. I know the oth-er world is not like this, so

not like this. I know the oth-er world is not like this, so

\* Always put wind and speed to the word "run." With energy, sing "rrhu," then quickly close to sustained "nnn."

28

run, Ma - ry, run. —

run, Ma - ry, run. —

31

Fire in the east! — Run, Ma - ry, Fire in the west, — my Lord.

Fire — in the east! — Run, Ma - ry, Fire — in the west, — my Lord.

35

*cresc.* Fire all a - round — this world. *f* 'Bound to burn in the wil-der - ness. —

*cresc.* Fire — all a - round — this world. *f* 'Bound to burn in the wil-der - ness. —

*cresc.*



49

rit.

not like this, — so run, Ma-ry, run. —

not like this, — so run, Ma-ry, run. —

rit.

53 **A little slower and freely** (♩ = 100)

Swing low, char - iot, in - to the east. —

**A little slower and freely** (♩ = 100)

56

Swing low, char - iot

Let God's chil - dren have some peace.



59

in - to the west. — Let God's chil - dren have some rest.

Let God's chil - dren have some rest.

62

**a tempo** (♩ = 124-130)

Run, Ma-ry, run. — Run, Ma-ry, run, —

Run, Ma-ry, run. — Run, Ma-ry, run, —

**a tempo** (♩ = 124-130)

66

— I say. — Run, Ma - ry, run. — I

— I say. — Run, Ma - ry, run. — I

69

know the oth - er world is not like this. — I know the oth - er world is

know the oth - er world is not like this. — I know the oth - er world is

72

not like this, — so run, Ma-ry, run. — Ma - ry, run. — Ma-ry, run. —

not like this, — so run, Ma-ry, run. — Ma - ry, run. — Ma-ry, run. —

*mp* *cresc.*

*mp* *cresc.*

*mp* *cresc.*

76

Ma-ry, run. — Run, Ma-ry, run! —

Ma-ry, run. — Run, Ma-ry, run! —

*f* *ff*

*f* *ff*

*f* *ff*

**For promotional use only  
unlawful to copy or print**

# *BriLee Music*

*the Voice of Choral Music*

BriLee Music, founded by the late Brian Busch in 1997, is the leader in publishing choral music written specifically for the developing middle school and junior high singer.

With writing guidelines carefully developed by Brian, teachers who buy from the BriLee catalog know they will always find the following in music written by BriLee composers:

- Range appropriate – specifically for the adolescent changing voice
- Moderate in length
- Interesting, appealing and varied texts
- Accessible accompaniments

Writers for BriLee are among the most outstanding and respected in their field. The music is written, arranged and edited to meet a wide range of performance needs. The standard of musical excellence we present in each choral work is designed to meet the challenges faced by teachers and conductors all over the world who wish to offer quality, accessible repertoire to their ensembles.

## *BriLee Music* **Part-by-Part**

MP3 rehearsal and accompaniments

Go to: [www.BriLeeMusic.com](http://www.BriLeeMusic.com)

Part-by-Part resources were created to allow you, the busy choral director, more time to do the things you need to do to be successful in rehearsal and performance.

Download the following resources and use them to help you TEACH your singers.

- Part-dominant recordings allow your singers to sing along with their part while hearing the other voices in the background.
- Full chorus recordings allow your singers to see and hear the music at the same time for greater insight.
- Professional accompaniments can be used for rehearsal or performance.

***BriLee Music***  
*the Voice of Choral Music*

BL1307



6 72405 01190 7

Exclusively Distributed by  
**CARL FISCHER®**  
[www.carlfischer.com](http://www.carlfischer.com)