

THE LAMB AND THE TIGER

2-part, accompanied with optional percussion

Music by
CYNTHIA GRAY

Text by
WILLIAM BLAKE FROM POEMS:
“THE LAMB” & “THE TIGER”

BriLee Music
Part-by-Part



Free MP3 rehearsal and accompaniments
Go to: www.BriLeeMusic.com

Ranges:



Language: English

Use: General

Time: Approx. The Lamb 1:37

The Tiger 1:47

TOTAL: 3:14

*Difficulty: Moderate

BriLee Music
the Voice of Choral Music

Performance Notes

The Lamb and The Tiger are two of William Blake's most famous poems. In *The Lamb*, Blake draws a pastoral picture of the innocent lamb with a "tender voice" grazing "by the stream." By comparison, the tiger shows us a fearsome beast with fiery eyes lurking in "the forests of the night." The poet asks the same question of each character, "who made thee?" as he himself tries to come to terms with the existence of both good and evil in the world.

Whether you perform these songs together or separately, it is important to capture the overall mood of the text. Tall vowels, an unhurried tempo and a beautiful legato will help create the sense of innocence needed in "The Lamb." "The Tiger," on the other hand, requires a rhythmic energy that comes from clean diction and ensemble precision. Add the accents in the conga part and the tiger should jump right off the page!

—Cynthia Gray

The Lamb and The Tiger

for Two-part Treble Voices with Keyboard and Optional Congas*

WILLIAM BLAKE

(from *Songs of Innocence and Experience*)

CYNTHIA GRAY

I. The Lamb

Gently ♩ = 54

Keyboard

Pt. 1

5 *mp*

Lit-tle Lamb who made thee? — Dost thou know who made thee? —

Pt. 2

Pt. 1

9 *cresc.*

Gave thee life and bade thee feed — by the stream and o'er the mead;

Pt. 2

* The part for Optional Congas may be found on pp. 14–15.

13 *mf* *mp*

Pt. 1 Gave thee cloth - ing of de-light, soft-est cloth - ing, wool - ly bright;

Pt. 2

17

Pt. 1 Gave thee such a ten - der voice, ma-king all the vales re - joice?

Pt. 2

21 *mp*

Pt. 1 Lit-tle Lamb, I'll

Pt. 2

sva-----

3

25

Pt. 1 tell thee, — Lit-tle Lamb I'll tell thee; — He is cal - led

Pt. 2 *mp* Lit-tle Lamb, I'll tell thee, — Lit-tle Lamb — He — is called

29

Pt. 1 *cresc.* by thy name, For he calls Him-self a Lamb. *mf* He is meek and

Pt. 2 *cresc.* by — thy name, For he calls Him-self — a Lamb. *dim.*

33

Pt. 1 *dim.* He is mild; *mp* I a child and

Pt. 2 — He be-came a lit - tle child. *mp* I — a child

37

Pt. 1
 thou a lamb, We are cal - led by His name _____

Pt. 2
 thou a lamb. Lit - tle lamb, God

40 *poco rit. e dim.*

Pt. 1
 Lit - tle Lamb, God bless thee! _____

Pt. 2
 bless thee! _____ Lit - tle Lamb, God bless thee! _____

dim. *p* *poco rit. e dim.*

II. The Tiger

With fire! ♩. = 128

Congas
mp cresc. *f*

Keyboard
f

6

Cong.

11

Pt. 1

f

Ti - ger! Ti - ger! burn-ing bright

Cong.

15

Pt. 1

in the for - est of the night, What im-mor - tal hand or eye could

Cong.

19

Pt. 1
frame thy fear - ful sym-me-try?

Pt. 2
f
In what dis - tant deeps or skies

Cong.

23

Pt. 2
burnt the fire of thine eyes? On what wings dare he as - pire? —

Cong.

27

Pt. 2
What the hand dare seize the fire? —

Cong.

31

Pt. 1 *mp* And what

Cong. *dim.* *mp*

34

Pt. 1 should - der, and what art, _____ *mp*

Pt. 2 _____ And what shoul - der, and what

Cong.

37

Pt. 1 *cresc.* Could twist the sin - ews of thy heart?

Pt. 2 art _____ Could twist the

Cong.

40 *dim.* *mp*

Pt. 1

And when thy heart be - gan to

Pt. 2 *cresc.*

sin - ews of thy heart?

Cong.

43 *cresc.*

Pt. 1

beat _____ What dread

Pt. 2 *mp*

And when thy heart be - gan to beat _____

Cong.

cresc.

46

Pt. 1 *f*
hand? What dread feet?

Pt. 2 *f*
What dread feet?

Cong.

49 *f*

Pt. 1 *f*
Ti - ger! Ti - ger! burn - ing bright in the for - est of the night,

Cong. *f*

53

Pt. 1
What im - mor - tal hand or eye could frame thy fear - ful

Cong.

56

Pt. 1

sym - me - try?

Pt. 2

f

When the stars threw down their spears,

Cong.

59

Pt. 1

Pt. 2

Wa - ter'd hea - ven with their tears, Did he smile his work to see? Oh

mp sub.

Cong.

dim.

63 *mp cresc.*

Pt. 1

did he smile his work to see? Did he who made the lamb make

Pt. 2

did he smile his work to see? Did he who made the lamb make

Cong.

mp cresc.

mp cresc.

65 *ff*

Pt. 1

thee? Did he make Thee?

Pt. 2

thee? Did he make Thee?

Cong.

ff

ff

8ba-----1

Congas

The Lamb and The Tiger

for Two-part Treble Voices with Keyboard and Optional Congas

WILLIAM BLAKE

CYNTHIA GRAY

(from *Songs of Innocence and Experience*)

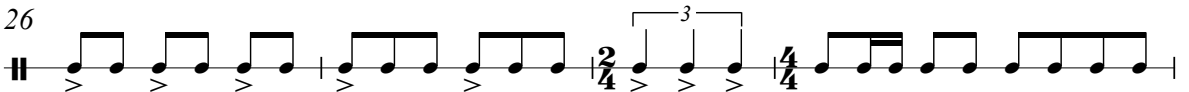
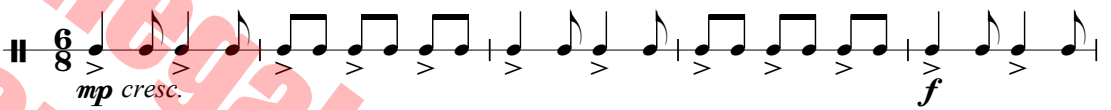
I. The Lamb

TACET



II. The Tiger

With fire! ♩. = 128



30

dim.

33

mp

36

39

42

45

cresc.

49

f

54

58

63

mp cresc.

65

ff

BriLee Music

the Voice of Choral Music

BriLee Music, founded by the late Brian Busch in 1997, is the leader in publishing choral music written specifically for the developing middle school and junior high singer.

With writing guidelines carefully developed by Brian, teachers who buy from the BriLee catalog know they will always find the following in music written by BriLee composers:

- Range appropriate – specifically for the adolescent changing voice
- Moderate in length
- Interesting, appealing and varied texts
- Accessible accompaniments

Writers for BriLee are among the most outstanding and respected in their field. The music is written, arranged and edited to meet a wide range of performance needs. The standard of musical excellence we present in each choral work is designed to meet the challenges faced by teachers and conductors all over the world who wish to offer quality, accessible repertoire to their ensembles.

BriLee Music **Part-by-Part**

Free MP3 rehearsal and accompaniments

Go to: www.BriLeeMusic.com

Part-by-Part resources were created to allow you, the busy choral director, more time to do the things you need to do to be successful in rehearsal and performance.

Download the following FREE resources and use them to help you TEACH your singers.



- Part-dominant recordings allow your singers to sing along with their part while hearing the other voices in the background.
- Full chorus recordings allow your singers to see and hear the music at the same time for greater insight.
- Professional accompaniments can be used for rehearsal or performance.

BriLee Music
the Voice of Choral Music

BL764 — \$2.25 USA



6 72405 00764 1

Exclusively Distributed by
CARL FISCHER®

65 Bleecker Street, New York, NY 10012
www.carlfischer.com