

The Lobster Quadrille

Music by

DAVID EDDLEMAN

Words by

**LEWIS CARROLL FROM
ALICE IN WONDERLAND**

SSA Voices with Keyboard

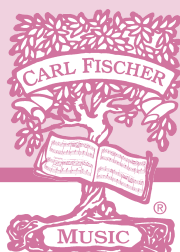
RANGES:



CARL FISCHER MUSIC
Part-by-Part



FREE MP3 rehearsal and accompaniments
www.carlfischer.com



Historical Information

Lewis Carroll, an English clergyman whose real name was Charles Lutwidge Dodgson, was born in the village of Daresbury on January 27, 1832. He was considered a dreamy young man who loved to spin wondrous tales to the children of his friends. One of those children, Alice Liddell, became a special favorite to whom he first related orally the stories that would become *Alice's Adventures in Wonderland*, perhaps the best known of all Victorian children's books, and still regarded as such today. *The Lobster Quadrille* is a poem from *Alice in Wonderland* contained in the section in which Alice meets the Mock Turtle and the Gryphon and is taught the dance by them.

The director might wish to read the story of *The Lobster Quadrille* from the book to the members of the chorus, as it will add much to the singer's understanding of the poem.

Performance Suggestions

Lightness of touch/tone may be the most important phrase in singing this setting of the quadrille, as the style is reminiscent of the patter songs found in Gilbert and Sullivan operettas.

It is imperative to keep the story in mind and realize the tale must be told clearly so the audience will understand. That being said, diction must be crisp and clean in order for the text to be clearly understood.

Warm-ups employing diction from within the text are highly encouraged prior to singing this song.
Enjoy!

The Lobster Quadrille

for SSA Voices with Keyboard

LEWIS CARROLL

DAVID EDDLEMAN

Lively ♩ = 120

Soprano 1

Soprano 2

Alto

Keyboard

f

f

f

f

“Will you walk a lit-tle fast-er,” said a

“Will you walk a lit-tle fast-er,” said a

“Will you walk a lit-tle fast-er,” said a

Lively ♩ = 120

4

whit-ing to a snail, “There’s a por-poise close be-hind us and he’s tread-ing on my tail. See how

whit-ing to a snail, “There’s a por-poise close be-hind us and he’s tread-ing on my tail. See how

whit-ing to a snail, “There’s a por-poise close be-hind us and he’s tread-ing on my tail. See how

Copyright © 2013 by Carl Fischer, LLC.

International Copyright Secured.

All rights reserved, including performance rights.

WARNING! This composition is protected by Copyright law. To photocopy or reproduce by any method is an infringement of the Copyright law. Anyone who reproduces copyrighted matter is subject to substantial penalties and assessments for each infringement.

Printed in the U.S.A.

ea-ger-ly the lob-sters and the tur-tles all ad-vance! They are wait-ing on the shin-gle, will you

ea-ger-ly the lob-sters and the tur-tles all ad-vance! They are wait-ing on the shin-gle, will you

ea-ger-ly the lob-sters and the tur-tles all ad-vance! They are wait-ing on the shin-gle, will you

The piano accompaniment consists of a treble and bass staff. The treble staff features a steady eighth-note melody in the right hand and a bass line in the left hand. The bass staff provides a simple harmonic accompaniment with occasional eighth-note patterns.

come and join the dance? Will you, won't you, will you, won't you, will you join the dance?

come and join the dance? Will you, won't you, will you, won't you, will you join the dance?

come and join the dance? Will you, won't you, will you, won't you, will you join the dance?

The piano accompaniment continues with a treble and bass staff. The treble staff has a melody of eighth notes, while the bass staff provides a simple accompaniment with eighth notes and rests.

13

Will you, won't you, will you, won't you, won't you join the dance?

Will you, won't you, will you, won't you, won't you join the dance?

Will you, won't you, will you, won't you, won't you join the dance?

The piano accompaniment consists of chords in the right hand and single notes in the left hand, following the vocal lines.

15

p Will you, won't you, will you, won't you, will you join the dance?

p Will you, won't you, will you, won't you, will you join the dance?

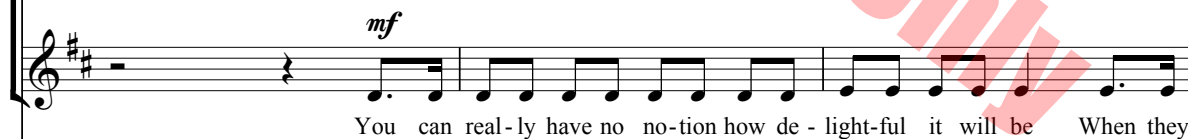
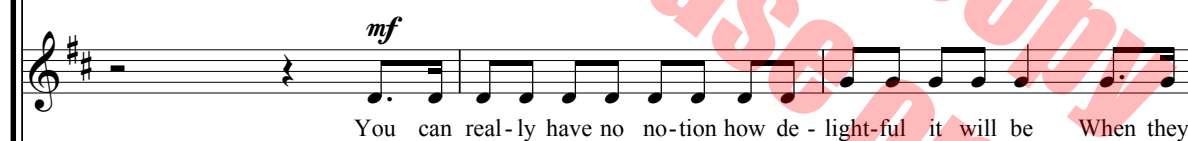
p Will you, won't you, will you, won't you, will you join the dance?

The piano accompaniment continues with chords in the right hand and single notes in the left hand, maintaining the harmonic support for the vocal parts.

17



20



23

take us up and throw us, with the lob-sters, out to sea!" But the snail re-plied, "Too far, too far!" and

take us up and throw us, with the lob-sters, out to sea!" But the snail re-plied, "Too far, too far!" and

take us up and throw us, with the lob-sters, out to sea!" But the snail re-plied, "Too far, too far!" and

26

gave a look a - skance, Said he thanked the whit - ing kind - ly, but he

gave a look a - skance, Said he thanked the whit - ing kind - ly, but he

gave a look a - skance, Said he thanked the whit - ing kind - ly, but he

28

Three vocal staves and a piano accompaniment. The vocal staves are in treble clef with a key signature of two sharps (F# and C#). The piano accompaniment is in grand staff (treble and bass clef) with the same key signature. The lyrics are: "would not join the dance. Would not, could not, would not, could not,". A large red watermark "Illegal to print or copy for on-screen use only" is diagonally across the page.

would not join the dance. Would not, could not, would not, could not,

would not join the dance. Would not, could not, would not, could not,

would not join the dance. Would not, could not, would not could not,

30

Three vocal staves and a piano accompaniment. The vocal staves are in treble clef with a key signature of two sharps (F# and C#). The piano accompaniment is in grand staff (treble and bass clef) with the same key signature. The lyrics are: "would not join the dance. Would not, could not, would not, could not,". A large red watermark "Illegal to print or copy for on-screen use only" is diagonally across the page.

would not join the dance. Would not, could not, would not, could not,

would not join the dance. Would not, could not, would not, could not,

would not join the dance. Would not, could not, would not, could not,

32

mp

could not join the dance.

Would not, could not, would not, could not would not join the dance.

mp

could not join the dance.

Would not, could not, would not, could not, would not join the dance.

mp

could not join the dance.

Would not, could not, would not, could not, would not join the dance.

35

p

Would not, could not, would not, could not, could not join the dance.

Will you join the dance?

p

Would not, could not, would not, could not, could not join the dance.

Will you join the

Would not, could not, would not, could not, could not join the dance.

38

Will you join the dance? Will you join the

dance? Will you join the dance? Will you join the dance?

p Will you join the dance? Will you join the dance?

mf

mf

For on-screen use only

41

dance? Will you, won't you, won't you join the dance? Will you

Will you, won't you, will you, won't you, won't you join the dance? Will you,

Will you, won't you, won't you, won't you join the dance?

For on-screen use only

43

join, will you, won't you, won't you join the dance?

will you, won't you, will you, won't you, won't you join the dance?

Will you, won't you, will you, won't you join the dance?

f

45

f

"What

49

mat-ters is how far we go?" his sca-ly friend re-plied. "There is an-oth-er shore, you know, u -

His sca-ly friend re-plied. "There is an-oth - er

His sca-ly friend re-plied. "There is an oth-er shore up -

mf

52

pon the oth-er side. The fur-ther off from Eng-land, the near-er is to France, Then

on the oth-er side. the near-er is to France, Then

on the oth-er side. the near-er is to

55

turn not pale, be - lov - ed snail, but come and join the dance.

turn not pale, but come and join the dance.

France, turn not pale but come and join the dance.

57

p Will you, won't you, will you, won't you, will you join the dance?

p Will you, won't you, will you, won't you, will you join the dance?

p won't you, will you, won't you, will you join the dance?

mp

59

mp

Will you, won't you, will you, won't you, won't you join the dance?"

mp

Will you, won't you, will you, won't you join the dance?

mp

Will you, won't you, will you, won't you, won't you join the dance?"

mf

61

p

Will you, won't you, will you, won't you, will you join the dance?

p

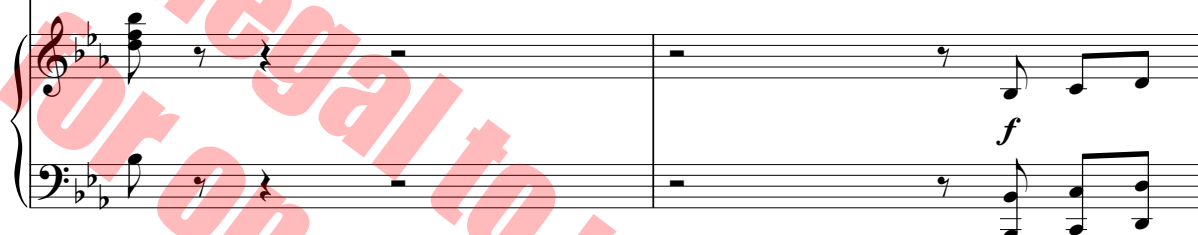
Will you, won't you, will you, won't you, will you join the dance?

p

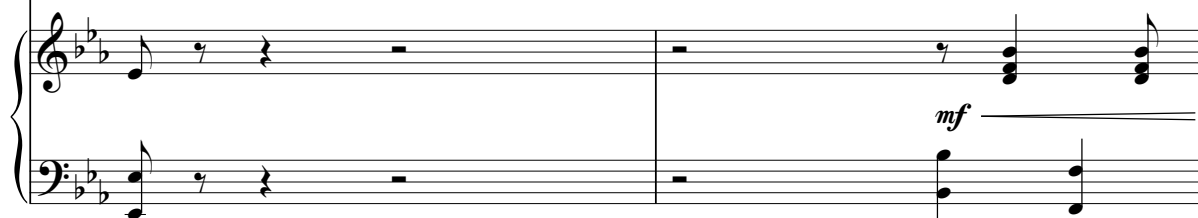
won't you, will you, won't you, will you join the dance?

f

63

mp*mp**mp*

65

pp*pp**pp*

67 *mf*

Will you, won't you, will you, won't you, won't you join the dance?

mf

won't you, will you, won't you Will you, won't you join the dance?

mf

dance? Won't you, Will you, won't you join the dance?

69 *ff*

Will you join the dance?

ff

Will you join the dance?

ff

Will you join the dance?

ISBN 978-0-8258-9069-7



9 780825 890697

**CARL FISCHER®**

65 Bleecker Street, New York, NY 10012

www.carlfischer.com**CM9279**

UPC



7 98408 09069 2