

LIKE A BIRD ON THE WING

SATB limited range, accompanied

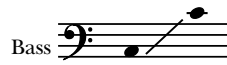
Music and words by
STEVE KUPFERSCHMID

BriLee Music
Part-by-Part



Free MP3 rehearsal and accompaniments
Go to: www.BriLeeMusic.com

Ranges:



Language: English

Use: General

Time: Approx. 2:33

*Difficulty: Moderate

Performance Notes

When we are inspired to sing, we feel as though our music gives us wings to fly. This song will fill your choir with the exhilaration of flight as the lyrical melody, uplifting harmonies and imaginative text portray the majesty and elegance of “a bird on the wing.” But it would be such a lonely flight without the companionship of a friend to share in the joy of adventure and the satisfaction of returning home. The limited vocal ranges in all parts make this the ideal “first SATB piece” for developing choirs in middle school, junior high and early high school. I hope it will inspire young musicians to sing their very best!

—S. K.

Illegal to print or copy
for on-screen use only

Like a Bird on the Wing

for SATB Voices (Limited Ranges) with Keyboard

3

Words and Music by
STEVE KUPFERSCHMID

Majestically ♩ = 100

Keyboard



6 Soprano, Alto *mf* unis.

Like a bird on the wing I will fly to the



10 end of the day. Like a bird I will sing of the beau - ti - ful



14 unis.

world I sur-vey. I will fol - low the sun. I will flee from the

Tenor, Baritone *mf* unis.

I will fol - low the sun. I will flee from the



Copyright © 2013 BLP Choral Music (ASCAP)
International Copyright Secured.

All rights reserved, including performance rights.

Printed in the U.S.A.

18

dark of the night, 'til my race has been won and the stars have sur -

dark of the night, 'til my race has been won and the stars have sur -

22

ren-dered their light. I'll ex-plore the seas and the des - erts

ren-dered their light. and the des - erts

26

wide, moun-tains full of trees, and I'll look in -

wide, moun-tains full of trees, and I'll look in -

30 *mp* Like a bird in the sky *mf*

side a rain - bow. ____ *mf* Just like a

side a rain - bow. ____ *mf* Just like a

mp

34 I will soar to the end of the earth. On the wind I will sigh

bird, I will fly and sigh

bird, I will fly and sigh

38 for cre - a - tion and all it is worth. I will face the un -

for cre - a - tion and all it is worth. I will face the un -

41

known. In the world there is so much to learn.

known. In the world there is so much to learn.

44

unis.
I will be on my own; will you wait for me 'til my re-turn?

I will be on my own; will you wait for me 'til my re-turn?

48

unis.
If you come a - long,

unis.
I won't be a - lone,

52 *f*

and it will be our song, our flight, our rain-bow's

and it will be our song, our flight, our rain-bow's

f

56

light guid-ing us home,

light guid-ing us home,

mf

59 *rit.* *p*

guid-ing us home. _____

p unis. _____

guid-ing us home. _____

rit. *mp* *p*

BriLee Music

the Voice of Choral Music

BriLee Music, founded by the late Brian Busch in 1997, is the leader in publishing choral music written specifically for the developing middle school and junior high singer.

With writing guidelines carefully developed by Brian, teachers who buy from the BriLee catalog know they will always find the following in music written by BriLee composers:

- Range appropriate – specifically for the adolescent changing voice
- Moderate in length
- Interesting, appealing and varied texts
- Accessible accompaniments

Writers for BriLee are among the most outstanding and respected in their field. The music is written, arranged and edited to meet a wide range of performance needs. The standard of musical excellence we present in each choral work is designed to meet the challenges faced by teachers and conductors all over the world who wish to offer quality, accessible repertoire to their ensembles.

BriLee Music **Part-by-Part**



Free MP3 rehearsal and accompaniments

Go to: www.BriLeeMusic.com

Part-by-Part resources were created to allow you, the busy choral director, more time to do the things you need to do to be successful in rehearsal and performance.

Download the following FREE resources and use them to help you TEACH your singers.



- Part-dominant recordings allow your singers to sing along with their part while hearing the other voices in the background.
- Full chorus recordings allow your singers to see and hear the music at the same time for greater insight.
- Professional accompaniments can be used for rehearsal or performance.

BriLee Music
the Voice of Choral Music

BL790 — \$1.80 USA



Exclusively Distributed by
CARL FISCHER®

65 Bleecker Street, New York, NY 10012
www.carlfischer.com