

THE GALLANT KNIGHT

TBB, accompanied

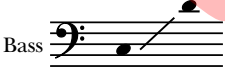
Music and words by
MARK PATTERSON

BriLee Music
Part-by-Part



Free MP3 rehearsal and accompaniments
Go to: www.BriLeeMusic.com

Ranges:



Language: English

Use: General

Time: Approx. 1:48

*Difficulty: Moderate

Performance Notes

Rehearsal and performance suggestions:

Crisp articulation of beginning and ending consonants is necessary because of the lively tempo and will help deliver the story to the listener.

Sing all the way through the half notes so that you establish a beautiful, legato tone at those moments (for example, m. 13 “sound your”). This will contrast nicely with the shorter and more rhythmic notes that characterize most of the piece.

Basses at mm. 36–38, 56–58 and 62–65, “think up” as your line descends by half steps and you will keep that passage in tune.

Sing this piece proudly and with confidence.

The Gallant Knight*

for TBB Voices with Keyboard

3

Words and Music by
MARK PATTERSON

Crisply $\text{♩} = 80-84$

Tenor

Bass 1
Bass 2

Keyboard

mf

High a-bove the
mf unis.

High a-bove the

Crisply $\text{♩} = 80-84$

mf

snow white cliffs of Do-ver, by the sea there lives a bold, cour - a-geous knight who

snow white cliffs of Do-ver, by the sea there lives a bold, cour - a-geous knight who

rides a trust - y steed. Sound your bat - tle cry and he will

rides a trust - y steed. Sound your bat - tle cry and he will

* Derived from *Tales of Land and Sea* (BLB007).

Copyright © 2009, 2013 BLP Choral Music (ASCAP)
International Copyright Secured.

All rights reserved, including performance rights.
Printed in the U.S.A.

16

soon be nigh. Fast he will ride to be there by your side, the gal - lant knight is

soon be nigh. Fast he will ride to be there by your side, the gal - lant knight is

20

he, yes, the gal - lant knight is he.

he, — yes, the gal - lant knight is he.

24

mf Dan - ger comes at ev - 'ry pass but none can slow his stride

mf Dan - ger comes at ev - 'ry pass but none can slow his stride

mf

28

stand - ing strong in ev - 'ry test, he wields his sword with pride.

stand - ing strong in ev - 'ry test, he wields his sword with pride.

32

f Sound your bat - tle cry and he will soon be nigh.

f Sound your bat - tle cry and he will soon be nigh.

36

Fast he will ride to be there by your side, the gal - lant knight is

Fast he will ride to be there by your side, the gal - lant knight is

39

rall.

he, yes, the gal - lant knight is he.

he, — yes, the gal - lant knight is he.

rall.

43

Broadly, in 4*mp*

Some men say the gal - lant knight is just the stuff of

Some men say the gal - lant knight is just the stuff of

Broadly, in 4

mp

46

dreams, but I have seen him face to

dreams, — but I have seen him face to

unis.

a tempo (Tempo I)49 *rall.**mf**mf* unis.

face

and he gave this charge to me:

face

and he gave this charge to me:

*rall.**a tempo* (Tempo I)*mf*

52

f
Sound

your

bat - tle

cry

and he

will

f
Sound

your

bat - tle

cry

and he

will

55

soon be nigh.

Fast he will ride to be there by your side, the

soon be nigh.

Fast he will ride to be there by your side, the

58

gal - lant knight is he, yes, the gal - lant knight is

gal - lant knight is he, yes, the gal - lant knight is

61

he. Fast he will ride to be there by your side, The

he. Fast he will ride to be there by your side, The

65

gal - lant knight is he. *ff* *No rit.*

gal - lant knight is he. *ff* *No rit.*

BriLee Music
the Voice of Choral Music

BL776 — \$1.80 USA



6 72405 00776 4

Exclusively Distributed by
CARL FISCHER®
65 Bleecker Street, New York, NY 10012
www.carlfischer.com