

# HOW CAN I KEEP FROM SINGING?

A Gospel Setting

2-part, accompanied

Music by  
GREG GILPIN

TEXT ADAPTED FROM QUAKER SONG

*BriLee Music*  
**Part-by-Part**



Free MP3 rehearsal and accompaniments  
Go to: [www.BriLeeMusic.com](http://www.BriLeeMusic.com)

Ranges:



Language: English

Use: General

Time: Approx. 2:50

\*Difficulty: Moderate

## Performance Notes

The contemporary gospel style is a highly charged, emotional music. It is not recommended that you stand still while performing this work. Since the sound of gospel music tends to be slightly brighter than other vocal music, it requires that you smile a lot. Clapping and swaying are definitely part of the performance. Well placed scoops are also appropriate. The soloist is allowed some extemporaneous latitude.

It's important that you have a good time with this music. However, remember the message and let that also determine your demeanor on stage and in the rehearsal room.

I feel relatively certain that the Shakers would approve of this setting.

— Brian Busch  
Founder, BriLee Music

# How Can I Keep from Singing?

(A Gospel Setting)

for Two-part Treble Voices and Solo Voice with Keyboard\*

Text adapted from  
Quaker Song

GREG GILPIN

With joy! ♩ = 116

*f* Hand claps on beats 2 and 4

Part 1

My life flows on in end - less song, -

Part 2

My life flows on in end - less song, -

Keyboard

*mp*

*f*

**\*\***

4

how can I keep from sing - ing? No storm can shake my in - most calm, -

how can I keep from sing - ing? No storm can shake my in - most calm, -

\* Also available for Three-part mixed Voices (BL152), SSA Voices (BL704) and SATB Voices (BL789).

\*\* Measures 2-10 may be performed *a cappella*, or the keyboardist may ad lib., as desired.

how can I keep from sing - ing? How can I keep from sing -

how can I keep from sing - ing? How can I keep from sing -

ad lib. as desired

*p*

ing?

ing?

*f*

Solo

end hand claps *mp*

What, though the tem-pest a - round me roars, —

*mp*

19

I know the truth it \_\_\_ live - eth. \_\_\_\_\_ What, though the dark-ness a - round

22

\_\_\_ me close, songs in the night it \_\_\_ give - eth. \_\_\_\_\_

25

I hear the real, though far \_\_\_ off hymn, that hails a new cre - a -

*mp*

Oo

*mp*

Oo

28

- tion. \_\_\_\_\_ It sounds an ech - o \_\_\_\_\_ in \_\_\_\_\_

\_\_\_\_\_ Oo \_\_\_\_\_

\_\_\_\_\_ Oo \_\_\_\_\_



30

\_\_\_\_\_ my soul, \_\_\_\_\_ a - bove earth's la - men - ta - tion. *cresc.* **end solo**

\_\_\_\_\_ Oh \_\_\_\_\_ *cresc.*

\_\_\_\_\_ Oh \_\_\_\_\_ *cresc.*

\_\_\_\_\_ *cresc.*



33 *mf*

My life flows on in end - less song, \_ how can I keep \_ from sing -

*mf*

My life flows on in end - less song, \_ how can I keep \_ from sing -

36

ing? No storm can shake my in - most calm, \_

ing? No storm can shake my in - most calm, \_

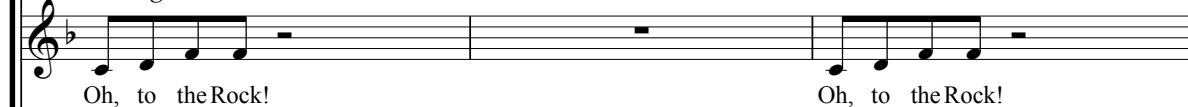
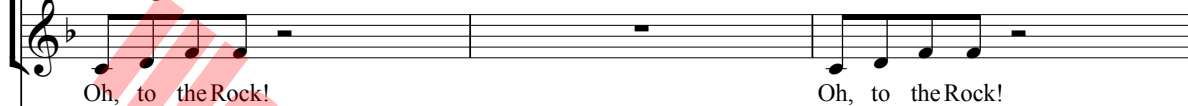
39

how can I keep from sing - ing? How can I keep from sing - ing?

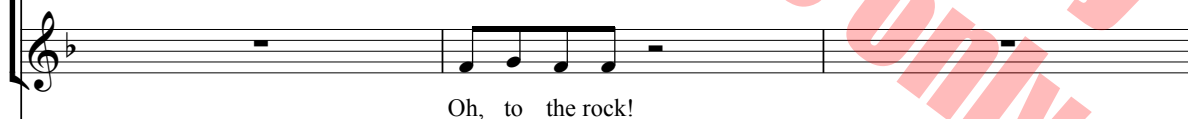
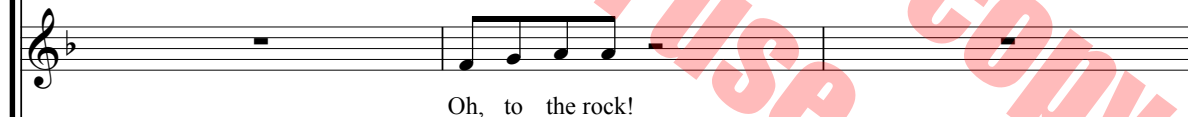
how can I keep from sing - ing? How can I keep from sing - ing?

43

Hand claps on beats 2 and 4.

*Strong!**Strong!*

46





49

end solo

Hear me sing - ing!

Oh, to the Rock! \_\_\_\_\_

My life flows on in end -

Oh, to the Rock! \_\_\_\_\_

My life flows on in end -

*p*

*f*

52

- less song, \_ how can I keep \_ from sing - ing?

- less song, \_ how can I keep \_ from sing - ing?

55

Two vocal staves and a piano accompaniment. The vocal staves are in treble clef with a key signature of one sharp (F#). The piano accompaniment is in treble and bass clef. The lyrics are: "No storm can shake my in - most calm, \_ how can I keep \_ from sing -".

58

Two vocal staves and a piano accompaniment. The vocal staves are in treble clef with a key signature of one sharp (F#). The piano accompaniment is in treble and bass clef. The lyrics are: "ing? My life flows on in end - less song, \_".

61

Two vocal staves and a piano accompaniment. The vocal staves are in treble clef with a key signature of one sharp (F#). The piano accompaniment is in treble and bass clef. The lyrics are: "how can I keep \_ from sing - - ing? No storm can shake my in -".

64

- most calm, \_ how can I keep \_ from sing - ing?

- most calm, \_ how can I keep \_ from sing - ing?

67

How can I keep \_ from sing - - ing? end hand claps

How can I keep \_ from sing - - ing? end hand claps

69 *grad. rit.*

How can I keep \_ from sing - - ing?

How can I keep \_ from sing - - ing?

*grad. rit.*

# *BriLee Music*

*the Voice of Choral Music*

BriLee Music, founded by the late Brian Busch in 1997, is the leader in publishing choral music written specifically for the developing middle school and junior high singer.

With writing guidelines carefully developed by Brian, teachers who buy from the BriLee catalog know they will always find the following in music written by BriLee composers:

Range appropriate – specifically for the adolescent changing voice  
Moderate in length  
Interesting, appealing and varied texts  
Accessible accompaniments

Writers for BriLee are among the most outstanding and respected in their field. The music is written, arranged and edited to meet a wide range of performance needs. The standard of musical excellence we present in each choral work is designed to meet the challenges faced by teachers and conductors all over the world who wish to offer quality, accessible repertoire to their ensembles.

## ***BriLee Music*** **Part-by-Part**

Free MP3 rehearsal and accompaniments

Go to: [www.BriLeeMusic.com](http://www.BriLeeMusic.com)

Part-by-Part resources were created to allow you, the busy choral director, more time to do the things you need to do to be successful in rehearsal and performance.

Download the following FREE resources and use them to help you TEACH your singers.



- Part-dominant recordings allow your singers to sing along with their part while hearing the other voices in the background.
- Full chorus recordings allow your singers to see and hear the music at the same time for greater insight.
- Professional accompaniments can be used for rehearsal or performance.

***BriLee Music***  
*the Voice of Choral Music*

**BL765 — \$1.95 USA**



6 72405 00765 8

Exclusively Distributed by  
**CARL FISCHER®**

65 Bleecker Street, New York, NY 10012  
[www.carlfischer.com](http://www.carlfischer.com)