

THE SONG THAT
NATURE SINGS

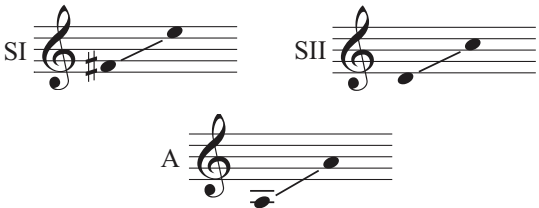
SSA, accompanied

Words and Music by
RUTH ELAINE SCHRAM

Illegal to print or copy
for onscreen use only

**BriLee Music
Part-by-Part** 
Free MP3 rehearsal and accompaniments
GO to: www.BriLeeMusic.com

Range:



Time: Approx. 2:15
*Difficulty: Moderate

Performance Notes

The Song that Nature Sings was one of the first songs Brian Busch chose to include in the BriLee Music catalog, published (in Unison) in 1997. It has been a perennial favorite since then, sung by Children's Choirs, Developing Choirs, Unison Choirs, and Solo Voices in countless venues.

One of the unique features of the early releases in the BriLee catalog was Brian's "Performance Notes," which he included whenever pagination allowed. Brian gave rehearsal tips, performance suggestions, historical or background information where appropriate, and musical instructions that benefitted both the conductor and the singer. His original Performance Notes for the Unison version of this work include the following information:

Bel Canto (It. lit. Beautiful singing) was a way of singing associated with the 17th and 19th centuries. It stressed a beautiful tone quality, ease of singing and even a sense of agility.

Within the interval of a 6th, Ruth Elaine Schram has created a beautiful bel canto melody that is within everyone's range. Even with mixed voices, the young men will be able to sing the work an octave below the treble voices.

When singing this song, stress the key words: beauty, love, grace, etc. Work on developing a beautiful, graceful tone quality and the sense of *legato* singing. Follow the natural rise and fall of the melodic line. Don't rush. At the end, sing your final phrase in a hushed tone, as if asking people to tune their hearts and ears and listen for the song that nature sings. Give a soft, gentle, unrushed release and then stand very still. Listen! You may hear the song ...

Once you have learned this work in unison, everyone has a solo ready for solo and ensemble festival. And don't forget Earth Day. It would be very appropriate at this time of year as well.

I hope SSA choirs will love this song as much as Unison choirs have. Enjoy *The Song that Nature Sings*!

Ruth Elaine Schram

THE SONG THAT NATURE SINGS

SSA, accompanied

Words and Music by
RUTH ELAINE SCHRAM

Expressively, not in strict tempo (♩ = 78-82)

Piano introduction in 4/4 time, marked *mp*. The right hand features a melody of eighth and sixteenth notes, while the left hand provides a simple accompaniment of eighth notes.

First vocal entry for Soprano I (SI), Soprano II (SII), and Alto (A). The vocal parts enter on measure 4 with the lyrics "In ev-'ry-thing there is beau-ty, a". The piano accompaniment continues. Dynamics include *mp* and *unis.*

Second vocal entry for Soprano I (SI), Soprano II (SII), and Alto (A). The vocal parts enter on measure 7 with the lyrics "hint of love, a form of grace. Though it may be hard to see, e-ven". The piano accompaniment continues. Dynamics include *mf*.

Also available as a Unison setting, BL109.

© 1997, 2011 BLP Choral Music (ASCAP)
All Rights Reserved. Printed in U.S.A.

poco rall.

hard - er to be - lieve, — ev - 'ry - thing in na - ture has its

poco rall.

hard - er to be - lieve, — ev - 'ry - thing in na - ture has its

poco rall.

a tempo mp

place. Oh, there is won - der, a

mp a tempo

place. And in ev - 'ry - thing there is won - der, a

mp a tempo

mf

mys - ter - y — to be un - done; new dis - cov - er - ies to find; sim - ple

mf

mys - ter - y — to be un - done, un - done; new dis - cov - er - ies to find; sim - ple

mf

18

pleas - ures re - de - signed; all things old and new be - neath the

pleas - ures re - de - signed; all things old and new be - neath the

20 *rall.* *f a tempo*

sun. Have you ev - er chased the

sun. Have you ev - er chased the

rall. *f a tempo*

rall. *f a tempo*

22

wind? Can you tell where it will go, or where it's

wind? Can you tell where it will go, or where it's

24 *rall.* *a tempo*

been? If you could see the earth through its eyes, do you

rall. *a tempo*

been? If you could see the earth through its eyes, do you

rall. *a tempo*

27 *rall.* *mf*

think that it would come as a sur - prise that in

rall. *mf*

think that it would come as a sur - prise that in

rall. *mf*

29 *a tempo*

ev-'ry-thing there is mu - sic? A mel-o - dy, a bit of

a tempo

ev-'ry-thing there is mu - sic? A mel-o - dy, a

a tempo

32 *rall.* song; *a tempo*

bit of song; Though it may not meet your ear, if you

rall. *a tempo*

bit of song; Though it may not meet your ear, if you

rall. *a tempo*

34 *rall.*

tune your heart to hear, — you will rec - og - nize and sing a -

rall.

tune your heart to hear, — you will rec - og - nize and sing a -

rall.

36 **Tempo I**

long the song that na-ture sings.

Tempo I

long the song that na-ture sings.

mp

39 *mp* *rall. e dim.*

You will rec - og - nize and sing a - long

mp *rall. e dim.*

You will rec - og - nize and sing a - long

rall. e dim.

41 *pp*

the song that na - ture sings.

pp

the song that na - ture sings.

p

Red.

BriLee Music

the Voice of Choral Music

BL700 — \$1.65 USA

UPC



Exclusively Distributed by

CARL FISCHER®

65 Bleeker Street, New York, NY 10012
www.carlfischer.com