

# Contents

<b>Choosing a Ukulele to Use with This Book</b> . . .	3	<b>Pickup Measures</b> . . . . .	21
<b>Book 1 Review</b> . . . . .	4	<i>A-Tisket, A-Tasket</i> . . . . .	21
<i>All the Notes I Know So Far</i> . . . . .	6	<i>Tom Dooley</i> . . . . .	22
<i>This Is an Octave</i> . . . . .	6	<b>Eighth Notes</b> . . . . .	23
<b>Largo</b> . . . . .	7	<i>Jammin' with Eighth Notes</i> . . . . .	23
<i>Largo</i> . . . . .	7	<i>Go Tell Aunt Rhody</i> . . . . .	24
<b>Dotted Half Notes &amp; <math>\frac{3}{4}</math> Time</b> . . . . .	8	<i>Love Somebody (Extended Version)</i> . . . . .	25
<i>Three Is for Me!</i> . . . . .	8	<i>Clementine</i> . . . . .	26
<i>The Farmer in the Dell</i> . . . . .	9	<b>Dotted Quarter Notes</b> . . . . .	28
<i>Beautiful Brown Eyes</i> . . . . .	10	<i>Counting Dotted Quarter Notes</i> . . . . .	28
<b>Introducing Common Time</b> . . . . .	11	<i>Cockles and Mussels</i> . . . . .	28
<i>Old MacDonald Had a Farm</i> . . . . .	11	<b>Dynamics</b> . . . . .	30
<b>Introducing B-Flat</b> . . . . .	12	<i>Echo Rock</i> . . . . .	30
<i>Aura Lee</i> . . . . .	12	<i>The Streets of Laredo</i> . . . . .	31
<i>Three-String Boogie</i> . . . . .	13	<b>The Down-and-Up-Stroke</b> . . . . .	32
<b>Tempo Signs</b> . . . . .	14	<b>The Fermata</b> . . . . .	33
<i>Three-Tempo Rock</i> . . . . .	14	<i>Michael, Row the Boat Ashore</i> . . . . .	33
<i>Rockin' Uke</i> . . . . .	15	<b>Introducing F-Sharp</b> . . . . .	34
<i>Good Night Ladies</i> . . . . .	16	<i>Little Brown Jug</i> . . . . .	34
<i>Blues in C</i> . . . . .	17	<b>The G Chord</b> . . . . .	35
<b>Ties</b> . . . . .	18	<b>The D7 Chord</b> . . . . .	35
<i>Down in the Valley</i> . . . . .	18	<i>Over the Rainbow (Extended Version)</i> . . . . .	36
<b>Key Signatures</b> . . . . .	20	<b>Music Matching Games</b> . . . . .	38
<i>Ode to Joy (Extended Version)</i> . . . . .	20	<b>Ukulele Fingerboard Chart</b> . . . . .	39
		<b>Certificate of Completion</b> . . . . .	40

## Tuning Your Ukulele



Tracks 1 & 2

The CD contains all the warm-ups and tunes in Book 2, so you may listen and play along with them. You need to be sure your ukulele is in tune every time you start to play, especially when you want to play along with the CD. Listen carefully to the instructions on Track 1, then use Track 2 to get your ukulele in tune.

# Introducing B-flat



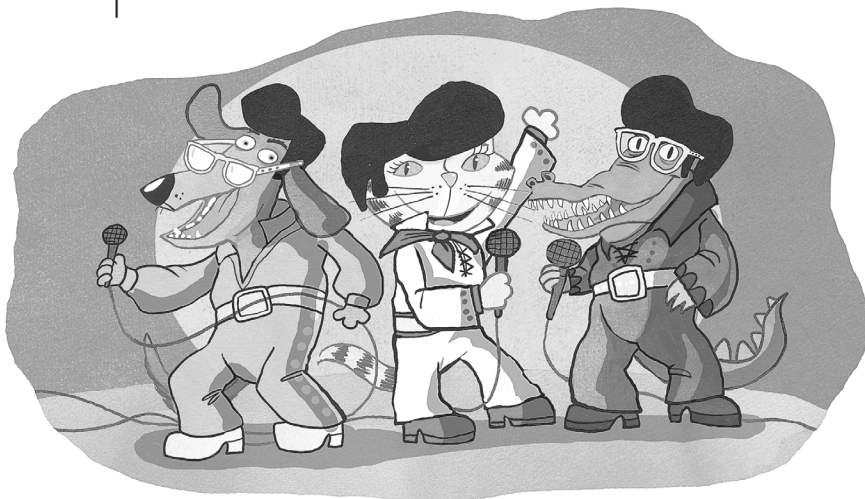
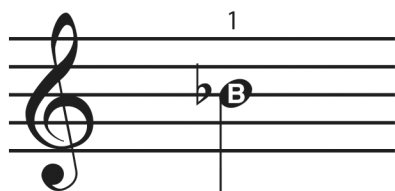
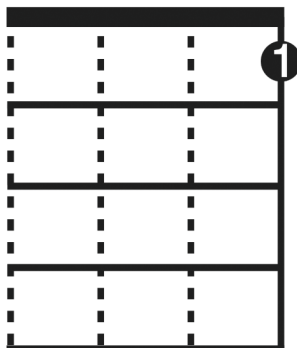
Hear  
this note!



Track 11

A *flat*  $\flat$  lowers a note a *half step* (the distance from one fret to another is called a half step).  $B\flat$  is played one fret lower than the note B. When a flat note appears in a measure, it is still flat until the end of that measure.

1st FRET

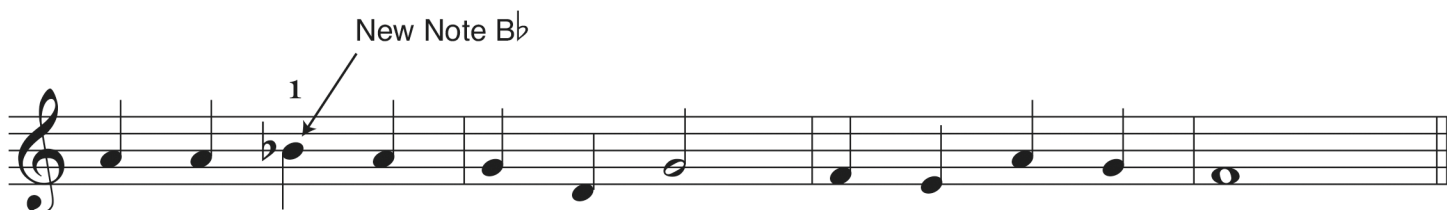
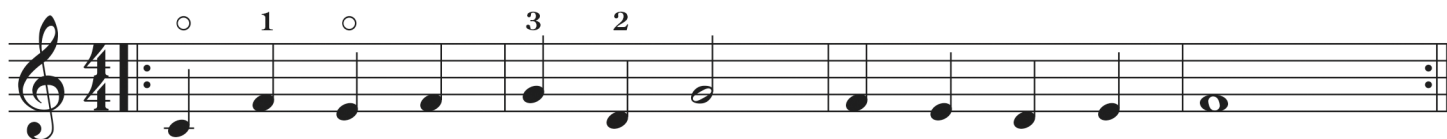


## Aura Lee



Track 12

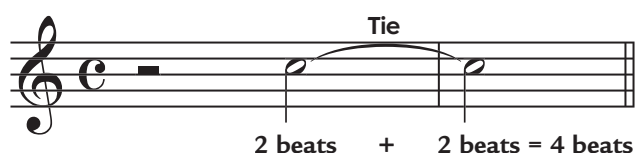
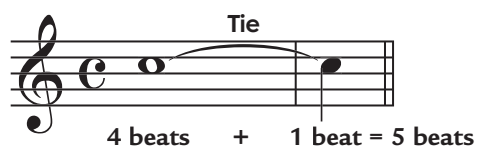
Elvis Presley recorded this folk song as a pop ballad called "Love Me Tender."



# Ties



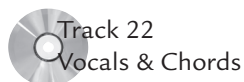
A *tie* is a curved line that connects two of the same note. When two notes are tied, don't play the second note, but keep the first note playing until the second note is done. You are really adding the two notes together.



## Clap and Count Out Loud



## Down in the Valley



Moderately

