

## FOREWORD

All the arrangements in this collection may be rung with only 6 ringers, and the Bells Used Chart for each piece provides suggested assignments. Four-in-hand ringing is never necessary, although bells could be assigned that way if desired. Because there are more than 12 bells used in each piece, some ringers will have more than two bells, and it will be necessary to have a table(s) or a place to put additional bells and optional mallets.

In each Bells Used Chart, the brackets and numbers indicate which bells are assigned to each of the 6 ringers. If more than one ringer could be assigned a specific bell, that is indicated as "4 or 5." If two or more ringers must share a bell, the BUC indicates in what measures each ringer will ring the bell - "2 (2-4, 10, 18), 3 (5-8, 12, 20-31)." These assignments are only suggestions, and may be modified to suit the needs of the group.

Occasionally a measure number will be enclosed in a circle. These rehearsal numbers help the director and ringers easily find good starting places. The use of mallets is always optional. If handchimes are available, groups are encouraged to experiment with ways to incorporate them. Melodies may be singled out by ringing them on chimes with the accompaniment rung on bells, or entire sections/verses may be rung on chimes to provide variety. Creativity is encouraged!

## Contents

Frosty the Snowman .....	3
Santa Claus is Coming to Town .....	6
Up On the Housetop .....	9
Rudolph the Red-Nosed Reindeer .....	11
The Little Drummer Boy .....	13

© 2006 Agape (a Division of Hope Publishing Company), Carol Stream, IL 60188  
All Rights Reserved. International Copyright Secured.

*The copying of this music is prohibited by law and is not covered by CCLI, LicenSing, or OneLicense.net.*

# FROSTY THE SNOWMAN

Handbells used: 13

HOPE Publishing Company

Since 1892

STEVE NELSON and JACK ROLLINS

Arranged by Martha Lynn Thompson

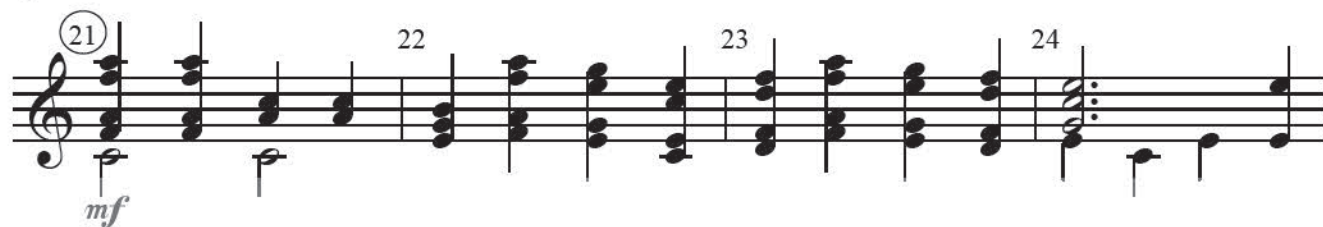
Moderato (♩ = ca. 120)

Handbell score for Frosty the Snowman, Moderato (♩ = ca. 120). The score is written for 13 handbells, indicated by the number 13 above the first staff. The music is in 4/4 time and features a variety of rhythmic patterns, including eighth and sixteenth notes, and rests. The score is divided into measures numbered 1 through 20. The first measure (1) is marked *mf* (mezzo-forte). The second measure (2) is marked *mp* (mezzo-piano). The score includes a large diagonal watermark reading "PREVIEW COPY NOT FOR PERFORMANCE".

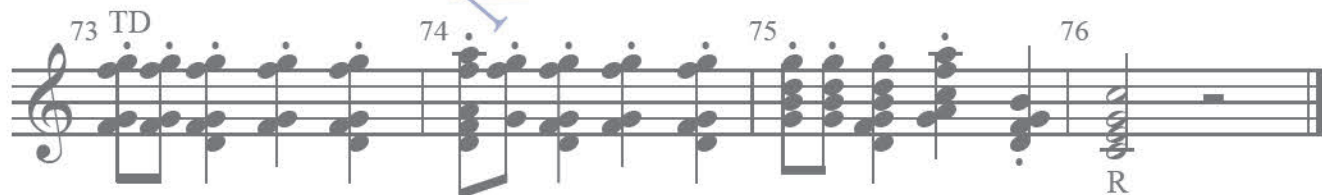
© 1950 by Chappell & Co. Copyright Renewed.

This arrangement © 2006 by Chappell & Co.

International Copyright Secured. All rights reserved. Used by permission.







# SANTA CLAUS IS COMING TO TOWN

Handbells used: 14

**HOPE Publishing Company**  
Since 1892

J. FRED COOTS  
Arranged by Martha Lynn Thompson

**Allegro moderato** (♩ = ca. 120)

1 2 3 4 5 6 2 (2-4, 10, 18, 34, 66)  
3 (5-8, 12, 20-31, 36-63)  
1 (68-69)

*mf*

5 6 7 8 *dim.* *mp*

9 10 11 12 *mf*

13 14 15 Sk 16

17 18 19 20

© 1934 (Renewed) EMI Feist Catalog, Inc.

Rights for the Extended Renewal Term in the United States controlled by  
Haven Gillespie Music and EMI Feist Catalog Inc.

All rights outside the United States controlled by EMI Feist Catalog Inc. (Publishing)  
and Alfred Publishing Co., Inc. (Print).

This arrangement © 2006 Haven Gillespie Music and EMI Feist Catalog Inc.

All rights reserved including Public Performance. Used by permission.





HOPE Publishing Company  
Since 1892

PREVIEW COPY  
NOT FOR PROMOTIONAL USE ONLY  
NOT FOR PERFORMANCE

49 50 51 52 53 54 55 56 57 58 59 60 61 62 63 64 65 66 67 68 69 70 71 72 73

R TD TD R TD R

TD TD

mf

LV LV LV LV

LV LV R Sk (C6) \*

\* When not using tables, use hip or thigh to mart final chord.

# UP ON THE ROOFTOP

Handbells used: 13

HOPE Publishing Company

BENJAMIN R. HANBY

Arranged by Martha Lynn Thompson

Moderato (♩ = ca. 120-128)

Since 1892

1

2

3

4

5

6

7

8

9

10

11

12

13

14

15

16

17

18

TD

*pp*

*mf*

3 R

FOR PROMOTIONAL USE ONLY

NOT FOR PERFORMANCE



HOPE Publishing Company  
Since 1892

TD *pp* 19 20 21 *pp* TD 22

R *mf*

23 24 25 26

27 28 29 R *mf* 30

31 32 33 34

*pp* TD 35 36 37 R *mf* 38

39 40 41 42

43 44 45 46 *ppp*

FOR PROMOTIONAL USE ONLY

NOT FOR PERFORMANCE

# RUDOLPH THE RED-NOSED REINDEER

Handbells used: 13



Alternate assignment:

Ringer 6 may take G & A and share F with ringer 5.

F at 6, 1-12 and 29-31

F at 5, 13-27 and 32-49

HOPE Publishing Company

Since 1892

Moderato (♩ = ca. 112-120)

JOHNNY MARKS

Arranged by Martha Lynn Thompson



HOPE Publishing Company  
Since 1892

21 22 23 24 Sk  
LV R

25 26 27 28 Sk

29 30 31 32 Sk

33 34 35 36

37 38 39 40 Sk  
LV R

41 42 43

1. 44 Sk 45 46  
LV R

2. 47 Sk 48 49  
LV R

FOR PROMOTIONAL USE ONLY



# THE LITTLE DRUMMER BOY

Handbells used: 14

Moderato (♩=ca.112-120)

KATHERINE K. DAVIS  
HENRY ONORATI and HARRY SIMEONE  
Arranged by Martha Lynn Thompson

Since 1892

*mp* TD or mallet

1 2 3 4 5 6

1 2 3 R 4

5 6 7 8

9 10 *pp* 11 12

13 14 *pp* 15 16

17 18 19 20

*f* *mf* *cresc.* *dim.*

HOPE Publishing Company  
Since 1892

21 22 23 24 *pp*

25 26 27 28 *mf* *dim* *mp*

29 30 31 32 *pp*

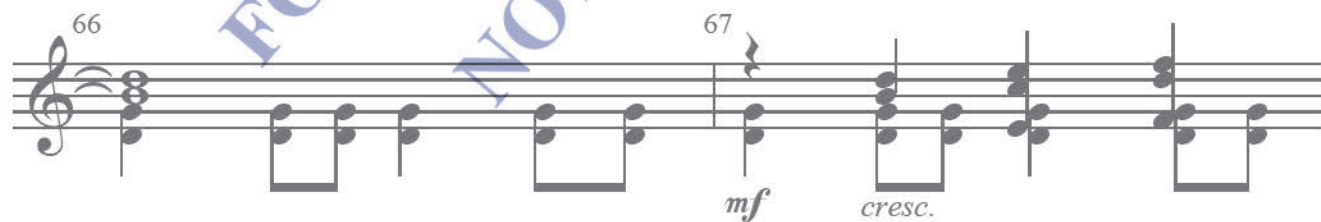
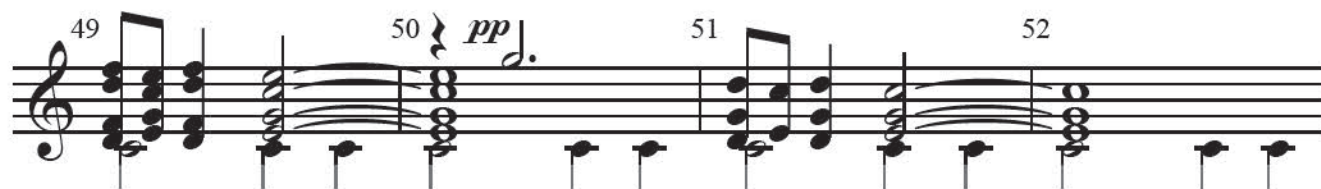
33 34 35 36 *pp*

37 38 39 40

41 42 43 44 *mp* *cresc.* *mf*

45 46 47 48 *dim.* *mp*

PREVIEW COPY  
NOT FOR PROMOTIONAL USE ONLY  
NOT FOR PERFORMANCE





HOPE Publishing Company  
Since 1892

68 69 *ff*

70 71 *dim.*

72 73 74 *mf dim.*

75 76 77

78 79 80

TD/Mallet

81 82 83 84 *pp dim. ppp*

Price Code: R

7 63628 12376 5

FOR PROMOTIONAL USE ONLY

\* When not using tables, use hip or thigh to mart-lift G5 (as a half note) as indicated by triangular notehead and arrow.  
TD or mallet C5 on table from here to end.